



Georgia Department of Public Health

Georgia Telehealth Initiative

Suleima Salgado, MBA

Telehealth Director

March 12, 2014



We Protect Lives.

Background

- Georgia is ranked 40th in the nation in physician distribution in terms of specialty and geographic location, according to the Georgia Board of Physician Workforce.
- Fifty-two percent of all physicians are located in five primary areas that serve just 38% of the population.
- In 2008, 32 of the state's 159 counties had fewer than five physicians.
- In Georgia, obesity is more prevalent among non-Hispanic blacks at 37.6% than non-Hispanic whites at 26.1%.

Telehealth vs. Telemedicine

- **Telehealth**- the use of electronic information and telecommunications technologies to support long-distance clinical health care, patient and professional health-related education, public health and health administration. Technologies include videoconferencing on a secure, private network with store-and-forward imaging, streaming media, and wireless communications.
- **Telemedicine** – the use of medical information exchanged from one site to another via electronic communications to improve a patient’s clinical health status. Telemedicine includes a growing variety of applications and services using two-way video, email, smart phones, wireless tools and other forms of telecommunications technology. May involve medical scopes, x-rays, ultrasound or other medical applications.

Telehealth Goals

- **Increase access to care**
 - Address the state's most pressing health challenges, including infant mortality, oral health, obesity and associated diseases
 - Connect Georgians with the specialized care they need that may not exist in every community, i.e. monitoring of a high-risk pregnancy.
- **Increase capacity at DPH sites statewide**
 - Implement Telehealth in each of the state's 18 Public Health Districts and all 159 counties

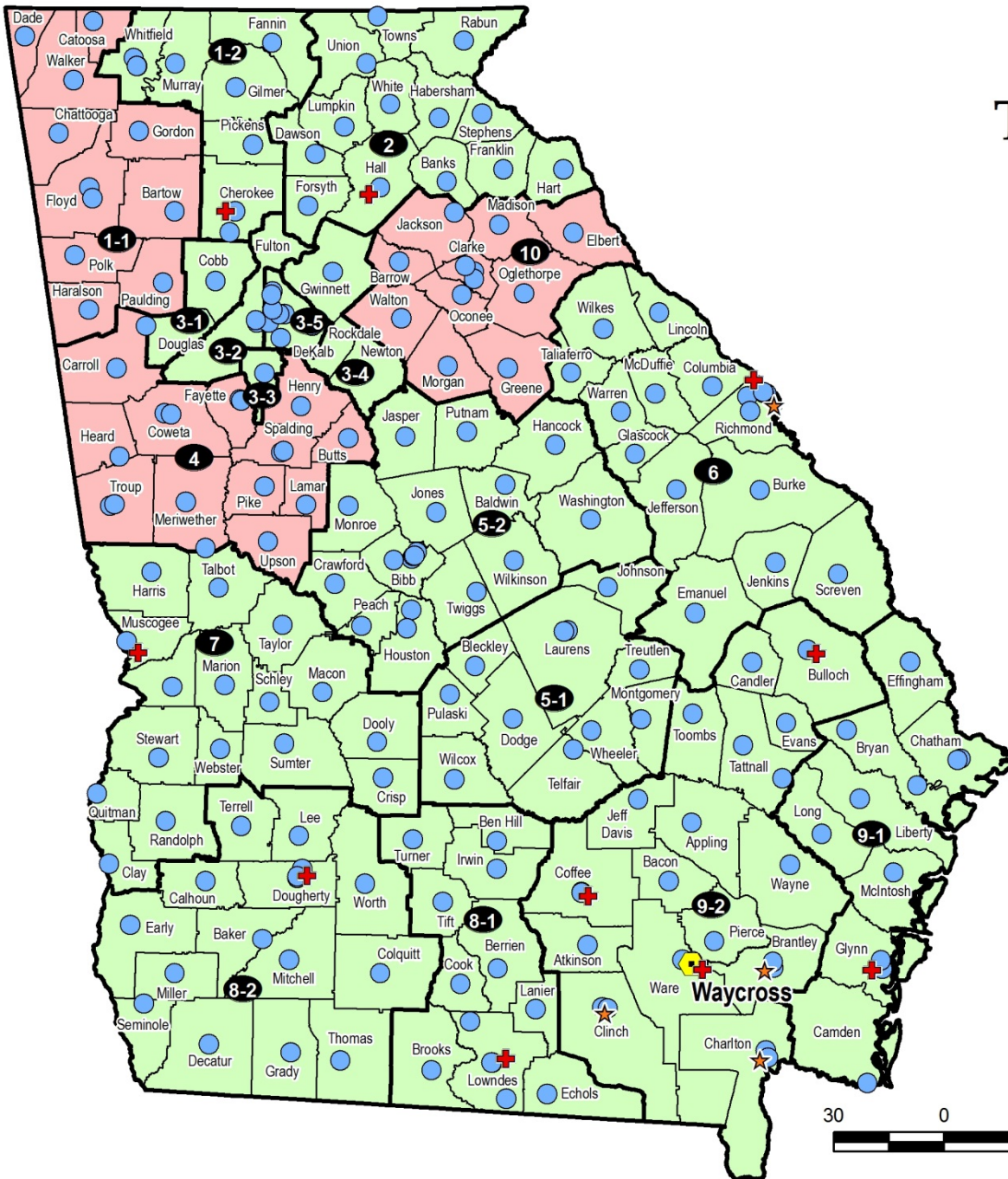
Telehealth Network

- ★ Teledentistry
- ⊕ Telemedicine
- ⬡ Network Hub (Waycross)
- End Point Locations (HDs & WIC Centers)

Network Status

- Complete
- Projected Completion: February 2014

- | | |
|----------------------------------|-------------------|
| 1-1 Northwest | 5-1 South Central |
| 1-2 North Georgia | 5-2 North Central |
| 2 North | 6 East Central |
| 3-1 Cobb/Douglas | 7 West Central |
| 3-2 Fulton | 8-1 South |
| 3-3 Clayton | 8-2 Southwest |
| 3-4 Gwinnett, Newton, & Rockdale | 9-1 Coastal |
| 3-5 DeKalb | 9-2 Southeast |
| 4 District 4 | 10 Northeast |



Created: February, 2014
 By: Office of Health Indicators for Planning (OHIP)
 Source: Department of Public Health
 Projection: Georgia Statewide Lambert Conformal Conic



Telehealth Use / Benefits

- **Administrative/Operational** - employment interviews, staff meetings, HR updates, professional development,
 - **Emergency Preparedness** - virtual District Operations Center, community partner engagement, language translation, planning, communication, and training;
-
- **Decreased travel** and lost wages for patients
 - **Better utilization** of work time and decreased travel costs for staff
 - **Access to specialty services** and training not available in rural settings
 - **Reaches populations** that may otherwise never receive services (convenience)

Telemedicine

- Originating Site



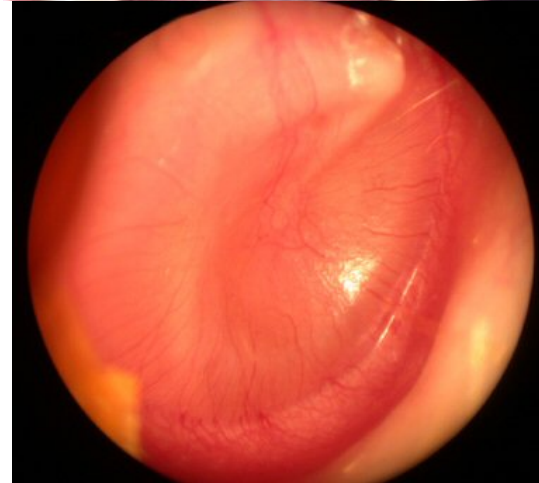
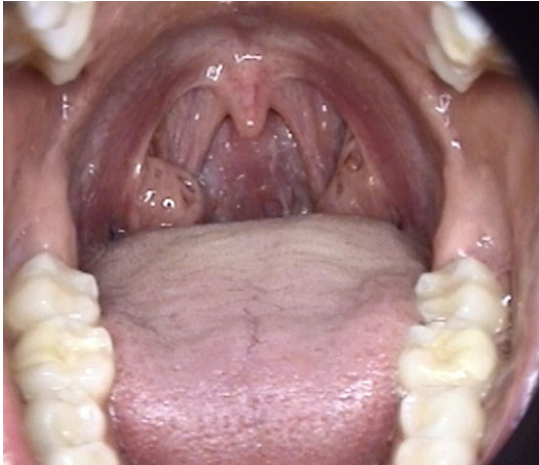
- Medical Cart



- Distant Site

- **Originating Site** - the actual location where a patient is located
- **Medical Cart** – interactive and secure telecommunications system
- **Distant Site** – The site where physician or practitioner is located

Telemedicine Technology



Telemedicine Projects

High Risk OB Clinic

- Centering Pregnancy
- Ultrasound / Colposcopy
- Consult w/ Maternal Fetal Medicine Specialist

WIC Nutrition

- Breastfeeding Support
- Nutrition Education
- Staff Training/Development

Children's Medical Services

- Asthma/Allergy
- Developmental and Genetics
- Pediatric Neurosurgery
- Endocrinology

HIV/AIDS

- Patients at local clinics see DPH Infectious Disease specialist
- Mobile presentations from home or community setting

Some Telemedicine Partners



Future Growth

- **Secure Additional Funding Sources**
 - Purchase five additional telemedicine carts
- **Increase Distant Learning Opportunities**
 - Internal & Stakeholders
- **Expand Network**
 - Recruit & survey additional physicians (Georgia Volunteer Health Care Program: GVHCP)
 - Develop sustainable business model
- **Increase available services**
 - Expand Teledentistry
 - Expand High Risk OB / Centering Pregnancy
 - Division of Family & Children Services (DFACS)
 - School-based telemedicine programs

Contact Information

**GA Public Health Video Network
1.855.PHVIDEO**

**Suleima Salgado, MBA
susalgado@dhr.state.ga.us
404.657.2305**